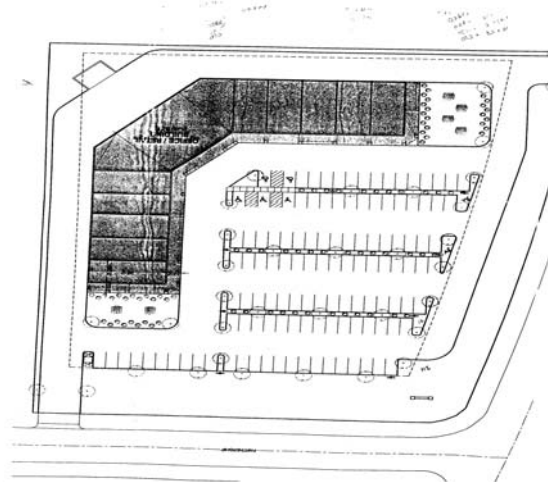
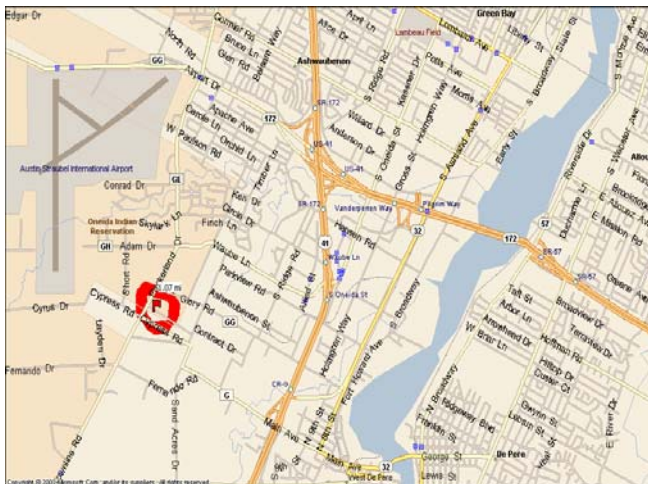


# Ashwood Centre

## *Retail / Office Building*

### *3377 Packerland, Ashwaubenon*



**NICOLET**  
REAL ESTATE

920-496-0993

[www.nicoletrealestate.com](http://www.nicoletrealestate.com)

“Our job is your space”

- *Near major employers in business park*
- *Easy access to HWY 41 and 172*
- *Located on future major thoroughfare*
- *New construction allows for tenant defined build out*
- *Ample on site parking*
- *1,450 to 21,000 sq/ft suites*
- *High ceilings*